

Meeting:	Council
Meeting date:	Friday 12 July 2019
Title of report:	Children and Young People's Plan 2019 - 2024
Report by:	Cabinet member for Children and Families

Classification

Open

Decision type

Budget and policy framework

This is a key decision because it is likely to be significant having regard to: the strategic nature of the decision; and / or whether the outcome will have an impact, for better or worse, on the amenity of the community or quality of service provided by the authority to a significant number of people living or working in the locality (two or more wards) affected.

Notice has been served in accordance with Part 3, Section 9 (Publicity in Connection with Key Decisions) of the Local Authorities (Executive Arrangements) (Meetings and Access to Information) (England) Regulations 2012.

Wards affected

(All Wards);

Purpose and summary

To approve the Children and Young People's Plan 2019-2024.

The draft Children and Young People's Plan 2019 - 2024 (CYPP), attached at Appendix A, includes priorities that will enable continued service improvement to support positive outcomes for all children and young people throughout Herefordshire. The plan establishes key priorities and outlines how they will be achieved through work undertaken by all participating partner agencies.

Further detailed delivery plans for each priority are being formulated with partners and relevant multi-agency groups that will identify specific actions, governance arrangements and expected timescales for realising the goals set out in the CYP Plan.

Recommendation(s)

That:

- (a) the draft Children and Young People's Plan 2019-2024 at appendix A be approved by Council.

Alternative options

1. The Children and Young People's Partnership could continue to work within the 2015-2018 plan or adopt different priorities. This approach is not recommended as it would mean the partnership is working to deliver priorities that are out of date, do not acknowledge achievements made since 2015, may not reflect current views of children and young people in Herefordshire, may not respond to trends highlighted within the latest Joint Strategic Needs Assessment, and does not enable the effective alignment to other relevant strategies across the partnership.
2. Dispense with a strategic plan for the children and young people of Herefordshire. Children, young people and families expect organisations, agencies and services to work together to provide the effective support that they may need. There has been strong commitment from partners to a strategic plan in previous years, which has helped to drive service improvements within and between organisations. Dispensing with such a plan is likely to have a negative impact on multi-agency accountability and coordination in the future

Key considerations

3. The Children and Young People's Plan is a key enabler for the Herefordshire Health and Wellbeing Strategy to give children the best start in life.
4. The Herefordshire Children and Young People's Partnership oversees the development and delivery of the Children and Young People's (CYP) Plan. The partnership includes:
 - 2gether NHS Foundation Trust
 - Early years and education sectors
 - Economic Partnership Development Group
 - Healthwatch Herefordshire
 - Herefordshire Clinical Commissioning Group
 - Herefordshire Council
 - Herefordshire Safeguarding Children Board
 - Herefordshire Voluntary Organisations Support Service
 - West Mercia Police
 - West Mercia Youth Justice Board
 - Wye Valley NHS Trust
5. The Children and Young People's Plan covering the period 2015 – 2018 had the aim of ensuring that 'The children and young people of Herefordshire have a great start in life and grow up healthy, happy and safe within supportive family environments' and identified six priorities for action.
6. A review of Herefordshire's performance relating to those six priorities has been undertaken. Each priority area has been reviewed to determine areas of progress and to highlight areas where further focus is necessary over the coming years to further improve outcomes for children and young people in Herefordshire.

7. Achievements and challenges (2015-2018):

- a. Priority 1 - Early Help: The Family First programme has successfully supported over 1,244 families (exceeding the target of 600) in need of early help, of which 366 have achieved sustainable change (up to December 2018). Lead workers have been identified for each family who have co-ordinated relevant services to meet the family's needs. The programme continues to broaden its work with partners to support early identification, ensuring families are identified at an early stage.

The Early help offer was highlighted as an area to be further strengthened throughout the stakeholder engagement work undertaken, particularly with professionals. A new Early Help Strategy is being prepared to consider actions that will help to tackle ongoing challenges for families in Herefordshire including domestic abuse and neglect.

- b. Priority 2 - Early Years: The percentage of mothers who breastfeed their babies in the first 48hrs after delivery has improved (from 67.7% in 2014/15 to 74.8% in 2016/17) and is 0.3% above the national average. Seventy four point one per cent of children at the end of the reception year achieved a good level of development and Herefordshire was again in the top quartile of local authorities in England in 2017/18. The number of 3 & 4 year old children benefiting from early education in a good/ outstanding provider has risen from 87% in 2015 to 95% in 2018.

It is recognised that the prevalence children who are overweight or obese is still an issue that needs to be addressed locally, and although improvements have been recently reported in terms of oral health, Herefordshire continues to perform below the national average.

- c. Priority 3 - Mental health and emotional wellbeing: A joint review into special educational needs and disabilities by the CQC and Ofsted in September 2016 acknowledged the low waiting times and flexible provision by Child and Adolescent Mental Health Services. Herefordshire has achieved improvements in both waiting times for assessment and treatment for these services. The Herefordshire Children and Young People Mental Health and Emotional Wellbeing Transformation Plan 2015-2020 has been refreshed, including a clear roadmap for further improvement.

Stakeholder engagement highlighted that mental health remains a key area that must be reflected within the new CYP plan. Increasing awareness and early support around emotional wellbeing and mental health were particular areas of focus.

- d. Priority 4 - Children and young people in need of safeguarding: Herefordshire has improved the local response to child sexual exploitation with strong partnerships in place, and an increased ability to identify those which may be at risk. Foster carer recruitment has been better than the regional trend, however additional focussed work is underway to further improve the sufficiency of the Council's in-house fostering service to ensure more looked after children can be placed closer to home.

The number of looked after children in Herefordshire remains high and the new plan will provide an opportunity to consider how a stronger early help and edge of care offer can help to prevent children becoming looked after.

- e. Priority 5 - Addressing challenges for teenagers: Admission episodes (crude rate per 100,000) for alcohol specific conditions is 39.9 for Herefordshire (15/16 – 17/18) and has continued to decline, in line with national trends. There have been improvements in the support available through the 16 plus team which supports young people as they transition into adulthood. The rate of first time entrants to the criminal justice system has reduced (from 565.2 in 2015 to 447.2 in 2017) although this is still higher than the England average (295.1) and is a priority area for the Community Safety Partnership.

Increasing opportunities for children and young people to contribute to their local community and to be better prepared for adulthood were key themes through the engagement work with children and young people and are captured in the new plan.

- f. Priority 6 - Children and young people with disabilities: The proportion of EHC (Education Health and Care) plans issued within 20 weeks is in the top quartile, 87.6% compared to 64.9% nationally (2017). Herefordshire has successfully ensured that 100% of children and young people with special educational needs statements now have a plan in place, meeting the national target for April 2018.

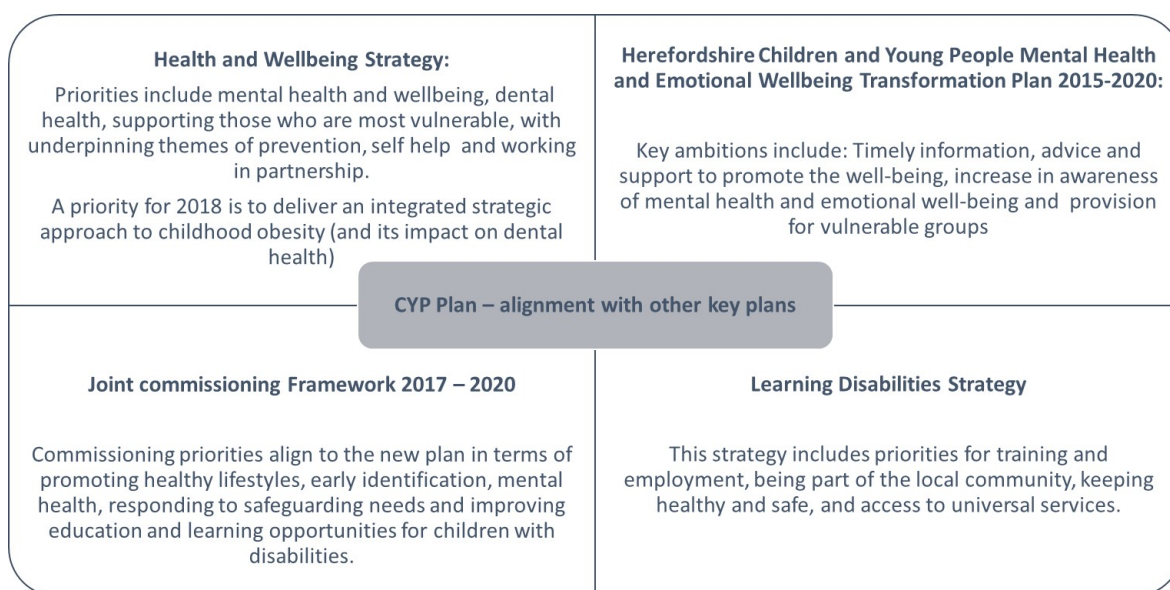
Recognition of the additional challenges faced by children with special educational needs and disabilities has been central to the increased focus on improving educational attainment and preparing for adulthood.

- 8. Having reviewed the previous plan, taken account of the latest data available from the Joint Strategic Needs Assessment and the latest Children's Integrated Needs Assessment (due for completion in summer 2019), considered recent Ofsted inspection feedback, and having listened to children young people and families, the Partnership has identified a range of issues to focus on during the next five years. The "Where are we now" and "Establishing our focus for the next five years" section of the draft plan (appendix A) detail the key issues. Briefly, these include:

- i. opportunities and information to keep healthy and active
- ii. relatively high levels of childhood obesity and dental decay
- iii. early support for emotional resilience and good mental health
- iv. access to work experience, employment opportunities and social mobility
- v. educational achievement of children in receipt of free school meals, looked after children and those with special educational needs and disabilities
- vi. accidents near schools, the potential dangers of traffic and the condition of some roads makes walking and cycling less attractive
- vii. higher than expected numbers of looked after children, compared to areas similar to Herefordshire
- viii. children and young people want to be heard and help improve their local environment and community so that they are more inclusive and accessible

- 9. To continue to address these issues, the Children and Young People's Partnership has prepared a new five-year plan (appendix A), where partner members make a pledge to children and young people for them to:

- i. be safe from harm - keeping children and young people safe
 - ii. be healthy - improving children and young people's health and wellbeing
 - iii. be amazing - helping ALL children and young people succeed
 - iv. feel part of the community - ensuring that children and young people are influential in our communities
10. Appendix B provides details of the partnership's initial action plans to deliver these pledges. The action plans are intended to be working documents, which will be regularly reviewed by the partnership and will be updated to address any challenges to progress or changes in local need and demand. Where appropriate, there will be further and more operational or project plans within and between partner members to deliver the detailed changes that will be required to achieve the pledges. Where relevant, individual service development proposals will be subject to additional governance requirements within one or more partner agency. Key partnership strategies including (but not limited to) Herefordshire Children and Young People Mental Health and Emotional Wellbeing Transformation Plan 2015-2020, the Local Maternity System Board Plan, the Joint Commissioning Framework 2017 – 2020, and the Learning Disability Strategy have been considered alongside the development of the new CYP plan to ensure it aligns and supports their delivery:



11. The CYP Plan 2019-2024 sets out Herefordshire's vision and priorities for children and families in Herefordshire and recognises that everyone has a role to play in making Herefordshire an even better place to grow and prepare for adulthood, including communities, families and children and young people themselves.
12. The partnership is aiming to move Herefordshire into the top quartile for a wide range of national indicators, and continue to further improve local performance even when a top quartile position has already been achieved. It is developing a performance dashboard to show the impact that is achieved against each of the pledges. Progress will be reported on a quarterly basis to the CYP Partnership board and overseen by the Health and Wellbeing Board. Where the Council has statutory accountability for services and outcomes that will be influenced by the plan, performance will be reported in accordance with the council's adopted Performance, Risk and Opportunity Management Framework.

13. Both the CYP plan and action plans will be made available once adopted by Herefordshire Council on the CYP Partnership's website. A group of young people are working with the partnership to develop a suite of communication tools that can be used to launch and promote the new plan. The young people have already brought considerable energy and enthusiasm to this project and ideas under development include short videos, web content, a plan on a page, and a launch event.

Community impact

14. The county has an older age profile and numbers of children have declined in Herefordshire by around 7% over the last decade. However, the number of under-fives and births has been rising for the best part of the last decade. The next five years are expected to yield a gradual increase in the numbers of 0-18yr olds in the county, to around 38,938 by 2023 (ONS population projections 2019).
15. The new CYP plan has taken into account relevant evidence including performance data, local analysis and engagement findings relating to children and young people in Herefordshire, to ensure that partnership actions address key local priorities. The plan intends to provide a framework within which partners can not only bring about change within their own field, but will also enable partners to work together to target interventions successfully, and ensure maximum impact.
16. The plan also recognises the central role that individuals, families and communities have in improving the lives of children and young people, and this will be further reflected within more detailed delivery plans.
17. While the plan will support all children and young people in Herefordshire, it is expected that it will particularly impact on some key groups. It is expected that the number of children that are looked after by the council will decrease as a result of improved multiagency early help and edge of care approaches. It is also expected that health inequalities and the gaps in educational achievement and employment and training outcomes will reduce between looked after children, those with special educational needs and disabilities, and their peers.

Equality duty

18. Under section 149 of the Equality Act 2010, the 'general duty' on public authorities is set out as follows:
19. A public authority must, in the exercise of its functions, have due regard to the need to -
 - a. eliminate discrimination, harassment, victimisation and any other conduct that is prohibited by or under this Act;
 - b. advance equality of opportunity between persons who share a relevant protected characteristic and persons who do not share it;
 - c. foster good relations between persons who share a relevant protected characteristic and persons who do not share it.
20. The CYP Plan is an opportunity to establish partnership actions which can promote equality, foster positive relations and address discrimination in Herefordshire.
21. The plan includes an Equality statement which states the partnership's commitment to equality and confirms that equality issues will be considered fully at each stage of any

development of plans/ further actions or implementation of new services. Where required this will include the undertaking of individual Equality Impact Assessments.

Resource implications

22. Although production of the new CYP plan will not have any direct resource implications, it does highlight investment in children and young people's services across the partnership, and provides an opportunity to identify:
 - a. Priority areas which may be responded to more efficiently;
 - b. Emerging issues which may require review of available resources;
 - c. Opportunities to use partnership resources more effectively.
23. Any potential resource implications relating to specific actions will be fully explored within delivery plans and be reported via appropriate governance on a case by case basis.

Legal implications

24. The CYP plan forms part of the policy framework for the council in accordance with children and young people's plan (England) regulations 2005.

Risk management

25. As an overarching strategic plan there are a number of risks associated with its development as highlighted below:

Risk / opportunity	Mitigation
The plan does not effectively reflect key priorities that relate to children and young people in Herefordshire	The plan has been developed alongside a number of key stakeholders, including over 300 children and young people. The consultation provided further opportunity to ensure the priorities contained within the plan are reflective of the views of children and young people in Herefordshire.
Ambitions reflected in the plan are unrealistic due to the limited partnership resource to support delivery	It is necessary for the plan to articulate key ambitions of the partnership, this will enable contributors to identify how resources available can be better aligned or more efficiently utilised. Quarterly monitoring will be undertaken in order to track delivery.
Lack of partnership engagement inhibits delivery	<p>Joint ownership of the CYP plan will be explicit at the outset. Partners are presently undertaking relevant approval processes for the Plan within their respective organisations.</p> <p>Partner commitment will be visible within the plan through inclusion of respective logo's/ signatures.</p> <p>Partner member governance arrangements will be robust, with clear accountability.</p> <p>The plan has been aligned to other key partnership plans and strategies including the Health and Wellbeing Strategy for Herefordshire.</p>

Consultees

26. The Children and Young People's plan was presented to cabinet on the 25 June 2019 and some minor amendments have been made within the action plan. Cabinet recommended the plan for approval by council.
27. To ensure that the CYP plan is informed by a broad range of stakeholder perspectives a significant number of engagement activities have been undertaken involving over 400 representatives across Herefordshire. This has included direct engagement with children and young people (over 300 results of which are outlined in appendix c). In addition, professionals involved in the delivery of key actions within the 2015-2018 plan, and a broad range of key partners including providers of services for young people and children were consulted.
28. Engagement included visits to schools across Herefordshire, groups including carers, children in care, children of service families, disabled children and their families, and children and young people with mental health needs. In summary:
 - The importance of mental health was prominent in almost all groups involved in the engagement work: 'There needs to be more understanding and better access to early help. Knowing where to get help is really important'.
 - Many groups focussed on increasing aspirations and supporting those who needed extra help to reach their goals: 'There is a lack of support for young people who are transitioning into adults'.
 - Some children and young people told us that that they sometimes didn't feel safe in some parts of the county. They also wanted more education on safety, including online safety and on healthy relationships.
 - It was clear from talking with children and young people that their communities and the local environment were issues that really mattered to them. They wanted to feel part of the community, find ways to contribute and to have their voices heard. Protecting the local environment, and having places locally where they could mix and be more active was a common theme.
29. In addition to the above engagement activity, consultation was undertaken between 27th July and 30th September on the draft plan providing a further opportunity to ensure the plan effectively reflected key priority areas, and received further views on key actions required across the partnership. This generated a further 64 responses from parents, providers and partners including Parish Council representatives; summarised in appendix D.
30. In addition the draft plan was been discussed at a number of partnership boards including the Herefordshire Joint Commissioning Board and the Herefordshire Health and Wellbeing (HWPB) Board. Actions identified by the HWPB board included:
 - taking the strategic priorities identified in the plan and work to deliver them through the governance structures of their respective organisations;
 - board members to reference and encourage discussion of the strategic priorities identified in the plan in forums not specifically dealing with children and families to identify opportunities for indirect contributions to achieving outcomes; and

- board members to publicise the plan and the outcomes achieved through it.
31. The draft plan was also considered by the children and young people's scrutiny committee, which was supportive of the approach and the draft plan.
32. The majority of respondents agreed with the priority areas and high level actions set out in the plan and shared their ideas of further actions necessary:
- Keeping children and young people safe – 85% agreed. Comments included: Recognition of the importance of parental support and multi- agency working.
 - Improving children and young people's health and wellbeing – 80% agreed. Comments included: Increasing mental health resilience, strengthening local involvement in national campaigns, and responding to barriers faced by marginalised groups.
 - Helping ALL children and young people succeed – 78% agreed. Comments included: increased support for children who experience barriers to achievement (including children in care, children with special educational needs and ethnic minorities) and better links between schools and businesses
 - Ensuring that children and young people are influential in our communities – 81% agreed. Comments included: the need to recognise and involve marginalised communities, raising community awareness, and demonstrably responding to children and young people's views
33. In total over 500 people have now contributed to the development of the plan either through workshops, partnerships meetings or surveys. The broad range of contributions bring confidence that the new plan reflects the priority areas of focus to improve children and young people's lives in Herefordshire.

Appendices

Appendix A: The Children and Young People's Plan 2019 - 2024

Appendix B: Action Plan

Appendix C: Voices of children and young people

Appendix D: Consultation feedback

Background papers

None